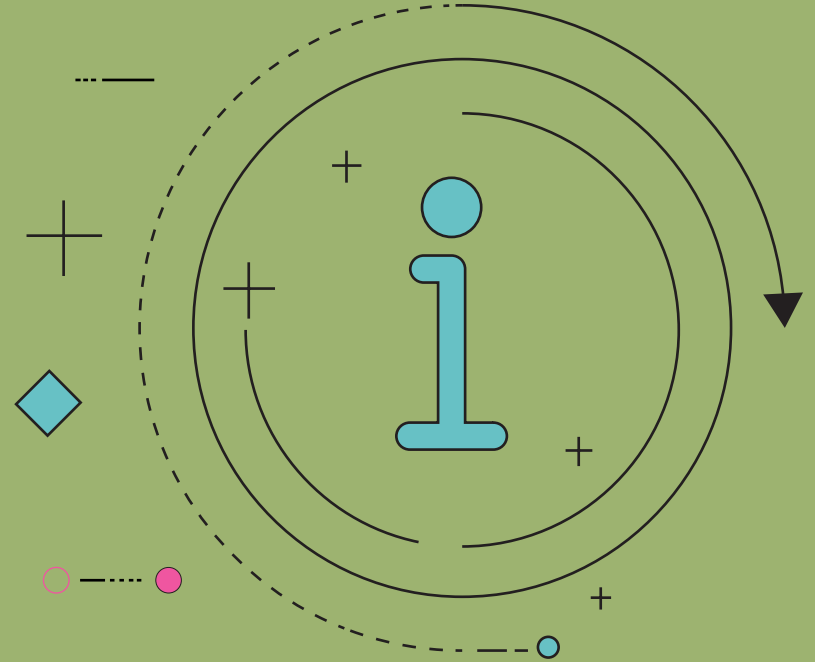




1000 Cities Challenge



**Global Healthy
and Sustainable**
City-Indicators Collaboration



01

About the 1000 Cities Challenge

Our vision is for the Global Observatory of Healthy and Sustainable Cities (GOHSC) to include data, scorecards, and reports from over *1000 cities* across the globe.

We invite city governments and organizations working with geospatial data scientists, policy researchers, and the Open Data community from around the world to join the 1000 Cities Challenge. The 1000 Cities Challenge aims to scale up the GOHSC to include over 1000 cities from across the globe. GOHSC provides comparable and evidence-based data, scorecards, and reports on policy and spatial indicators related to health and sustainability in cities, for setting evidence-based urban design, planning, and policy goals in cities and for tracking progress towards these goals.

The 1000 Cities Challenge team provides support for calculating indicators for teams seeking to incorporate entire urban areas of cities (i.e., the whole metropolitan area) as to the GOHSC. If you would like to calculate policy and spatial indicators sub-areas within a city, you can sign up to independently use our tools without participating in the GOHSC.

We are at the beginning of the Challenge and still developing tools and procedures. However, we expect that as we gather more experience, the procedures and support will improve.

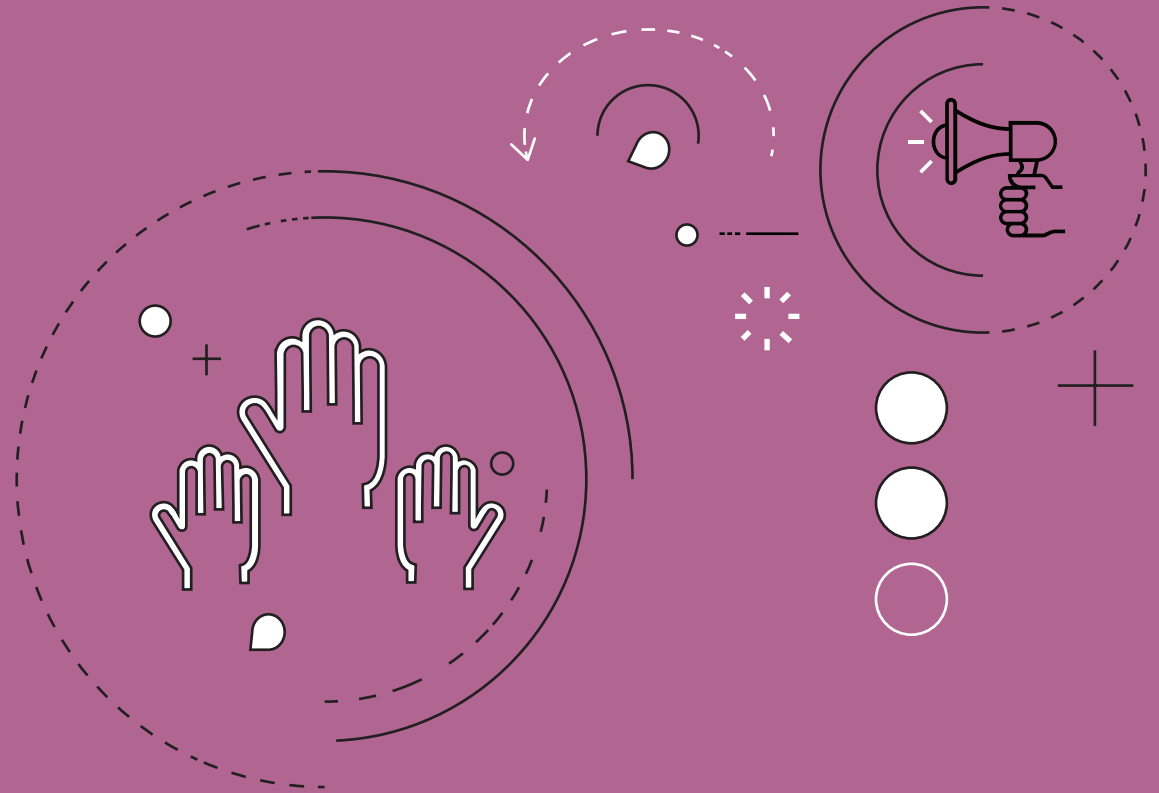


02

What does the Challenge involve?

In order to participate in the *1000 Cities Challenge* the following steps must be followed:

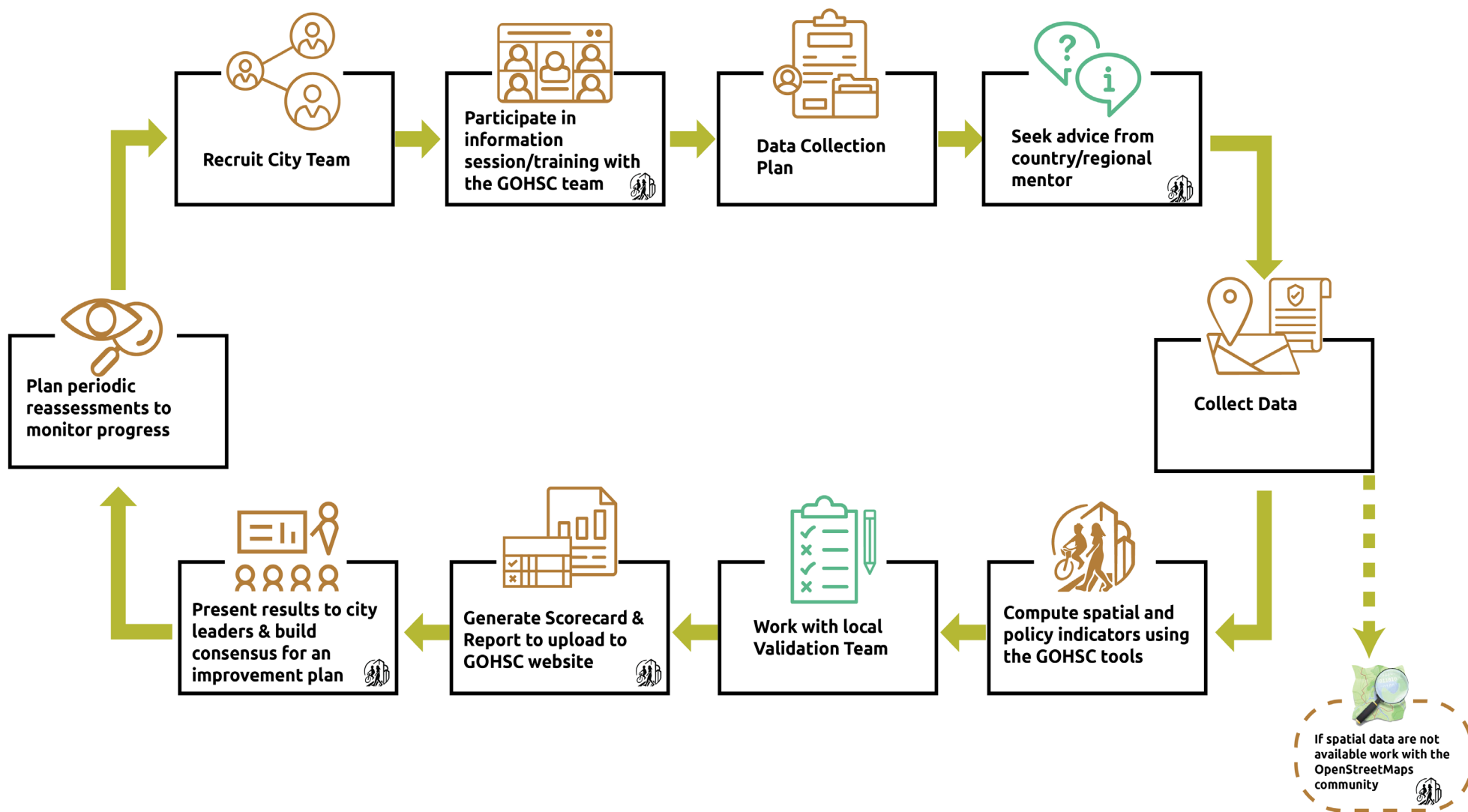
1. Sign up for the 1000 Cities Challenge
2. Receive training on data gathering/generating processes, data processing for indicator calculation, and scorecard and report generation.
3. Apply our open access tools, and generate policy and/or spatial indicators of healthy and sustainable cities for your city:
 - a. Use our policy indicators to assess the existence and quality of city planning policies
 - b. Use local open-access urban spatial data to calculate spatial indicators for your city and create maps illustrating the distribution of indicators across your city
4. Generate a GOHSC Indicators Scorecard and Report for your city
5. Upload your city's data, scorecard, and report for inclusion on the GOHSC website
6. Be part of a global effort to assess and improve the health and sustainability of cities
7. Use the indicators to set goals for improving health, sustainability, and equity in your city and monitor progress in achieving the goals



03

Pathway to Participation

1000 Cities Challenge Pathway to Participation



1. Recruit City Team



Recruit a team to gather the necessary data, use the GOHSC data processing tools to compute policy and spatial indicators for your city, and advocate for their use to improve health and sustainability in your city.

- Your city will need people with expertise in:
 - government policy
 - spatial analysis (including use of Open Access Data)
 - advocacy
- Sign up for the 1000 Cities Challenge to gain access to our data processing tools. Fill out the signup form for yourself or your team [\[link\]](#) [Survey asks about city/region, job title, organization, skills, willingness to share results in academic publications, and desired level of engagement (ability to provide data, already run code, advocate, provide funding)]
- When you complete the survey, you can request to join an already signed up city or regional group, connecting you with other people from your region who have signed up to participate.
- Your team will then be contacted by a Regional/Country Coordinator, who can assist you with the next steps.

2. Participate in information session/training with the GOHSC team



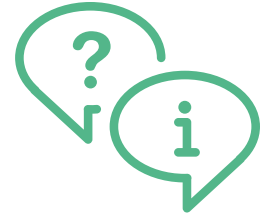
- City teams attend a short training workshop (or watch the recorded webinar) to learn about the steps involved and how to collect policy and spatial data

3. Data Collection Plan



- Decide on your plan for data collection.
- Think about the sources for the sources, data storing, and data cleaning

4. Seek advice from country/regional mentor



- Regional/Country Coordinators can act as mentors or guides and will be able to answer questions related to the data collection plan, policy and spatial indicators computation, and generation of the scorecard and report.

5. Collect Spatial Data




- Confirm the availability of OpenStreetMap data for your city. If open data sources are not available or inadequate, work with the OpenStreetMap community to collect data.



6. Compute spatial and policy indicators using the GOHSC tools

- **Policy indicators**

- Gather the required information using the tool/checklist available here:
 - Link to download becomes active once people have signed up
 - Instructions included to add links and page numbers to policy documents so that information can be validated
- Policy indicators include:


 Metropolitan transport policy with health-focused actions


 Employment distribution requirements


 Street connectivity requirements


 Housing density requirements

 Air pollution policies for transport and land-use planning


 Parking restrictions to discourage car use


 Provision of **pedestrian infrastructure** and targets for walking participation

 Minimum requirements for **public transport access** and targets for public transport use

 Requirements for public transport access to employment and services


 Minimum **public open space** access requirements


 Provision of **cycling infrastructure** and targets for cycling participation


 Publicly available information on **government expenditure** for different transport modes


- **Spatial indicators:**

- Once spatial has been gathered and cleaned, create the indicators using this checklist/guideline and online tools
 - Link to download becomes active once people have signed up
- Spatial indicators include:


 Population with access to fresh **food market** or supermarket

 Population with access to regularly running **formal public transport** (<20 mins)

 Population living in neighbourhoods above minimum connectivity threshold for WHO physical activity target

 Population living in neighbourhoods above minimum density threshold for WHO physical activity target

 Population living in neighbourhoods above the median **walkability** across cities

 Population with access to any public open space

7. Work with local Validation Team



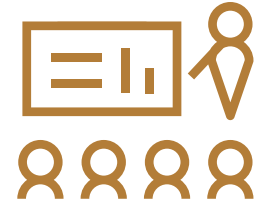
- Your Regional/Country Coordinator will coordinate the validation of your data to ensure it is as accurate as possible. This will be a peer-review process in which other local collaborators will review items from a checklist to assess the validity of the provided data.

8. Generate Scorecard & Report to upload to GOHSC website



- Use our tools to generate a Global Healthy and Sustainable City Indicators Scorecard and Report
- Once your results are validated, work with our team to upload your city's data to the Global Observatory of Healthy and Sustainable Cities

9. Present results to city leaders & build consensus for an improvement plan



- You are now ready to organize one or more meetings to present results to city leaders and encourage their use in setting goals to improve policies and environments in your cities.
- It is useful to have people from multiple sectors involved in the presentations
- There are recordings of local events in which indicators are presented to city leaders on the website

10. Plan periodic reassessments to monitor progress



- Keeping your city team together is ideal for continually advocating for progress and serving as resources for city leaders
- Repeating the calculation of indicators every few years provides occasions to celebrate progress, identify continuing deficiencies, and update goals

1000 Cities Challenge

Any questions?

Visit <https://www.healthysustainablecities.org>
or contact info@healthysustainablecities.org



**Global Healthy
and Sustainable**
City-Indicators Collaboration