



GINI Index (country)  
**32.9**

Total urban area (city)  
**439km<sup>2</sup>**

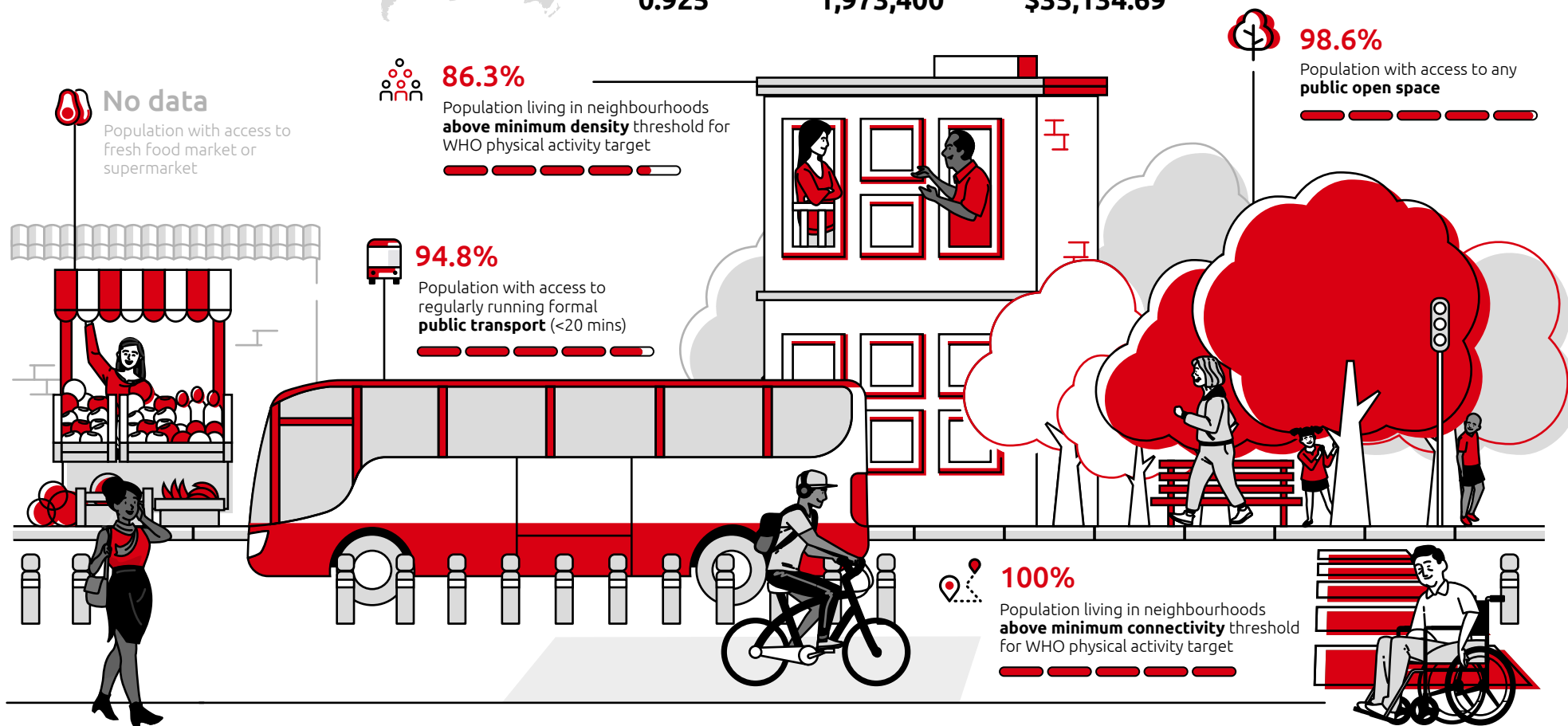
City-wide density (pop/Km<sup>2</sup>)  
**4,497.36**

HDI (country)  
**0.925**

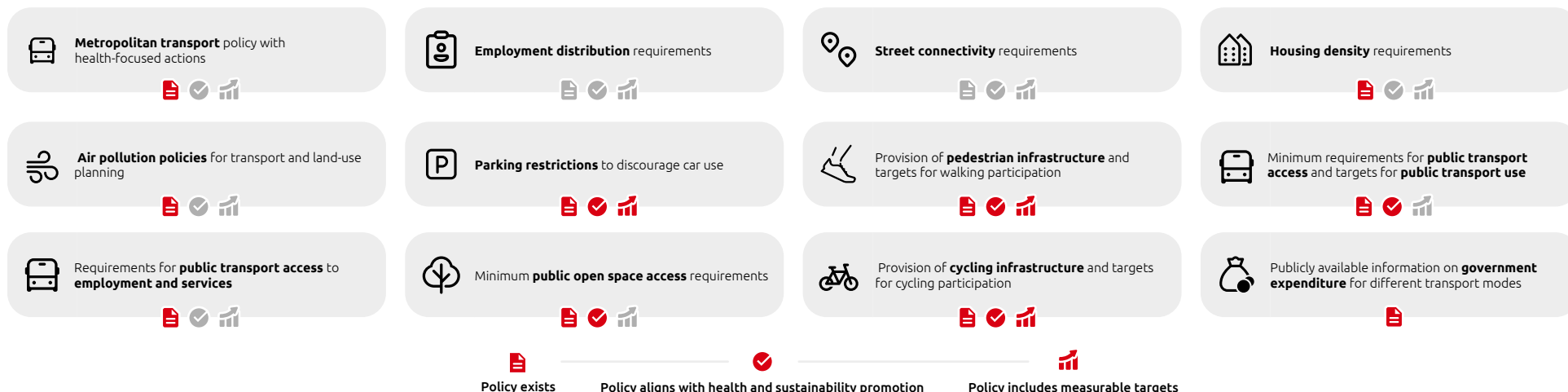
Total population (city)  
**1,973,400**

GDP per capita (INT \$)  
**\$35,134.69**

Spatial Indicators



Policy Indicators





© Global Observatory for Healthy and Sustainable Cities  
[www.healthysustainablecities.org](http://www.healthysustainablecities.org)

The evidence-based indicators and thresholds in this scorecard are based on an international study by the Global Healthy and Sustainable City-Indicators Collaboration, published in May 2022 in The Lancet Global Health (<https://www.thelancet.com/series/urban-design-2022>).

Full details of the data and methods are available at the Global Observatory of Healthy & Sustainable Cities Website: <https://www.healthysustainablecities.org>.

#### **City team members**

Takumi Yamada, Moe Takeuchi, Takumi Narusawa, Keita Fukushima, Ko Shiozaki, Tetsuya Takahashi, Mai Fukaya, Hiroshi Morita and Kimihiro Hino.

#### **Scorecard design**

Andres Ballen, Deborah Salvo and Eugen Resendiz.

#### **Suggested citation**

Yamada, T, Takeuchi, M, Narusawa, T, Fukushima, K, Shiozaki, K, Takahashi, T, Fukaya, M, Morita, H, Hino, K. 2023 Sapporo, Japan. Spatial and policy indicators for healthy and sustainable cities - a 1000 Cities Challenge Scorecard.

#### **GNI source**

World Bank Open Data. (2024). World Bank Open Data. <https://data.worldbank.org/indicator/SI.POV.GINI>

#### **Human Development Index (HDI) data source**

UNDP (United Nations Development Programme). 2022. Human Development Report 2021-22: Uncertain Times, Unsettled Lives: Shaping our Future in a Transforming World. New York.

#### **Population data source**

2020 Population Census

#### **Gross Domestic Product (GDP) per capita data source**

2020 Prefectural economic accounts

Additional details of the data and methods are available: 山田拓実, 竹内萌恵, 成澤拓実, 福島溪太, 塩崎洸, 高橋哲也, ... & 樋野公宏. (2023). 日本の基礎自治体における身体活動を促進する都市計画政策の現状 1000 Cities Challenge の指標を用いた試行的評価. 都市計画報告集, 21(4), 486-491. [https://doi.org/10.11361/reportscpij.21.4\\_486](https://doi.org/10.11361/reportscpij.21.4_486)